

WP-1000™ Wireless Emergency Call System

The WP-1000 is a personal alarm system designed to protect seniors who need immediate help in a medical emergency. The system works with a simple wireless pendant which will identify the user and allow care givers to come to their aid.

Its Advantages Include:

- **Easy** – Configure and maintain system with simple PC based software.
- **History Record** – Date, time and description of all alarms printed to a permanent hardcopy record.
- **Affordable** – Designed to accommodate careful budgets.
- **Complete Coverage** – Protects residents not only in their own apartments, but throughout the facility.
- **Accountable** – System records names of responding staff persons as they acknowledge each alarm. This creates an attitude of increased diligence and attentiveness among caregivers.
- **Off-Site Monitoring** – For facilities that are not staffed 24/7, alarms may be monitored off-site when needed.
- **Mobile** – Allows staff to receive emergency calls anywhere in the facility through alarm description to their pagers.
- **Fail Safe** – All wireless pendants are constantly supervised by the WP-1000 for low batteries and operational readiness.
- **Efficient** – Saves time and energy when used to send routine messages to staff.



Additional features include a water resistant pendant, which can be worn in the shower. A universal transmitter is available to monitor doors, windows, and other available wireless devices including smoke detectors, glass break detectors, and infrared motion detectors. The WP-1000 can monitor up to 3,000 wireless transmitters.



Multiple Alarm Indicators

To be sure that staff are notified, an incoming alarm may be displayed in a variety of ways. When received at the control panel, an alarm may be:

1. Viewed on a backlit display window
2. Printed by a dot matrix printer, and
3. Sent to pagers carried by staff.

In addition, an alarm will activate a beeper in the WP- 1000 control panel which will continue to sound until acknowledged by a staffperson.



Each pendant has its own unique message, such as "Room 25 Bill Smith,"

which appears on the display screen, printer, and pagers along with the date and time of alarm. Pending alarms may be reviewed on the display window via the scroll up and scroll down buttons on the control panel.

Wireless Pendants & Transmitters

Seniors may wear personal pendants, which will send an alarm from anywhere in the facility, with neck lanyards, belt clips, or wristbands. This protects them not only in their apartments, but also in common areas such as the dining room, laundry room, hallways, and even outside.



Mobile On-Site Pagers

The WP-1000 allows alarms to be customized

for any pager or group of pagers, eliminating the need to pay a person to monitor the console. This flexibility amounts to a substantial cost savings and increases staff efficiency. For example, alarms originating on the third floor could be sent only floor pagers.



Off-Site Notification & Response

The WP-1000 allows 24 hour monitoring, even when your facility is not staffed 24/7. An optional digital communicator calls a central monitoring facility, notifying trained monitoring personnel to dispatch emergency services and call designated persons from your staff. Another option is an automatic telephone dialer which can be attached to the WP-1000 and programmed to call up to eight telephone numbers with a pre-recorded voice message. These calls can go to 911, a 24-hour answering service, facility personnel, or city-wide pagers. Activation of the weekend and remote hours monitoring can be automatically controlled by a 7 day timer and adjusted to fit the work schedule of the facility. The system can also automatically unlock the building front door during an alarm to allow access to emergency personnel,



and then relock it after a specified time period (usually 1 hour). An optional remote display terminal, placed just inside the front door, directs responding emergency teams to the resident who sent the alarm.



Easy User Interface

The WP-1000 may be permanently connected to any facility personal computer running Windows 95™ or greater. An easy software program allows access to the configuration information in the WP-1000 control panel, allowing a staff person to change messages or add and delete pendants.

Convenient Pager Message Terminal

The system also serves as an efficient, convenient messaging center, allowing staff to dispatch maintenance or make routine requests to selected pagers or groups of pagers. Commonly sent messages can be saved and sent with a click of the mouse.

Fail Safe Pendant Supervision

Lives depend on the operational readiness of a life safety system. For this reason, all wireless pendants and transmitters continuously check in with the WP-1000 control panel. If any fail to make contact because of a low battery or any other problem, a supervisory alarm for that device is displayed, printed, and paged.

Reliable 900 Megahertz (MHz) Spread Spectrum Transmitters

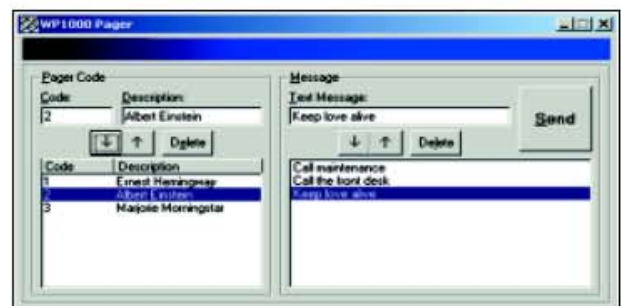
Reliability is the central issue with the WP-1000. All pendants and transmitters use sophisticated spread spectrum frequency-hopping technology, originally developed by the military to preserve the integrity of vital radio communications. To ensure dependability, each alarm is transmitted many times on several different frequencies. The signal is able to torpedo through noisy electrical barriers such as interference from hair dryers or nearby CB radios. In addition, the FCC allows 10 times more power in the 900 MHz band than in transmitters using older technology in the lower bands. More power spread across a broad spectrum means alarm transmissions will fulfill their mission semper fidelis—always faithful.

Staff Accountability

Human nature shows that if caregivers know they will be held accountable, they will be more diligent. This ensures better care for residents and reduces the facility's exposure and liability. A resident's alarm is acknowledged when staff activate their own "response pendants," causing the printer to record the name of the person who answered the alarm and the time of the response. This increased accountability makes the responding staff more efficient. The control panel will beep and continue to resend the alarm message to specific pagers, until the alarm is acknowledged.

Backup Battery Power Supply

A monitored backup battery power supply is vital when lives are at stake. The control panel, paging transmitter, and wireless receiver are powered by a backup battery power supply which will run for about 8 hours if power fails. A power failure triggers the system to notify staff and also sends a message when the backup battery becomes low.



Note: Windows 95 is a trademark of the Microsoft Corporation.

CARECALLER (866) 252 2255
www.carecaller.com
sales: sales@carecaller.com
customer service: cs@carecaller.com
technical support: support@carecaller.com